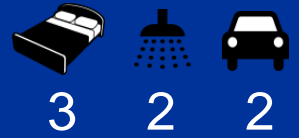




Trento 17

1 Diesel Close Teralba
Land valued at \$425,000

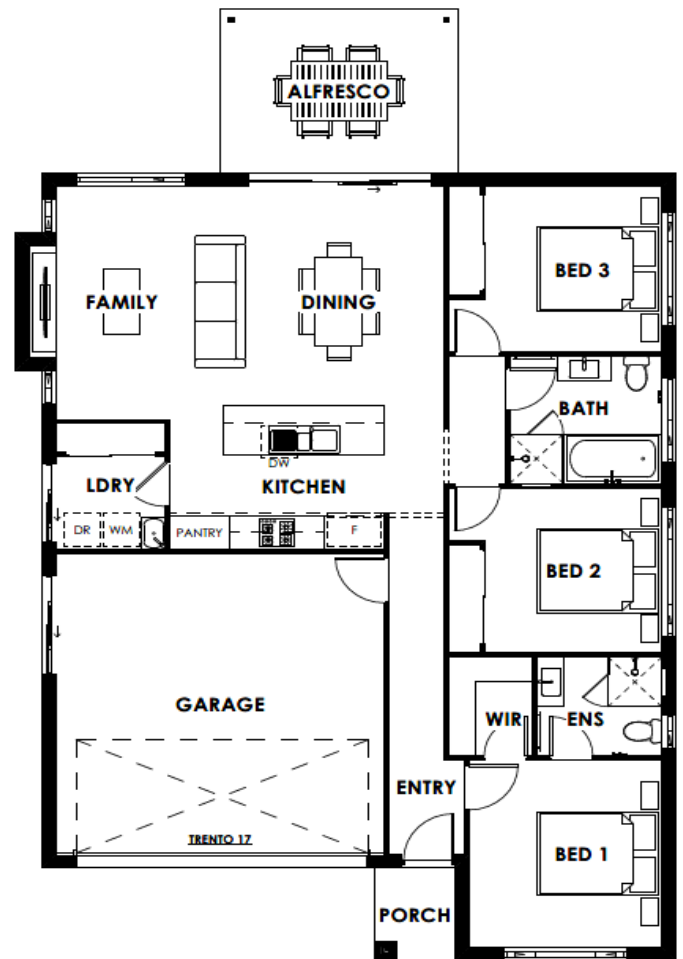
House Size: 156m² (16.8sq) Width: 12m Depth: 18.7m Minimum Lot Width: 13m



\$799,000

PACKAGE INCLUSIONS

- ✓ Façade as shown
- ✓ Modify standard plans
- ✓ Fixed Price Tender Guarantee
- ✓ Council fees based on Newcastle Council
- ✓ Site costs for M Class slab
- ✓ 7 Star Basix
- ✓ 20mm stone bench top to kitchen
- ✓ Soft close doors and drawers
- ✓ 3 coat paint system
- ✓ LED downlights
- ✓ Concrete to Alfresco
- ✓ Carpet and tiles throughout
- ✓ Steel frame
- ✓ Colorbond roof
- ✓ Anti-con Blanket
- ✓ Wall wrap
- ✓ Wall hung vanities
- ✓ 1000mm wall tiles to bathroom & ensuite
- ✓ Shower niches
- ✓ Flyscreens to windows



FOR MORE INFORMATION

Prices shown are based on pricelist dated 01/12/24

David Ashton | Homeworld Thornton | 40 024 749 | 0437 515 571 | thornton@visionhomes.com.au

BRICK RESIDENCE METAL ROOF



116°07'09"

19.688

LOT 10

638.2m²

EL I080544

FENCE (A) (P) (D)

PANEL 26°07'09"

(A) (P) (D)

METAL

(D) (C)

FP (D) (C) (P) (A)

S (DXL)

296°07'09"

WC ROLL TO

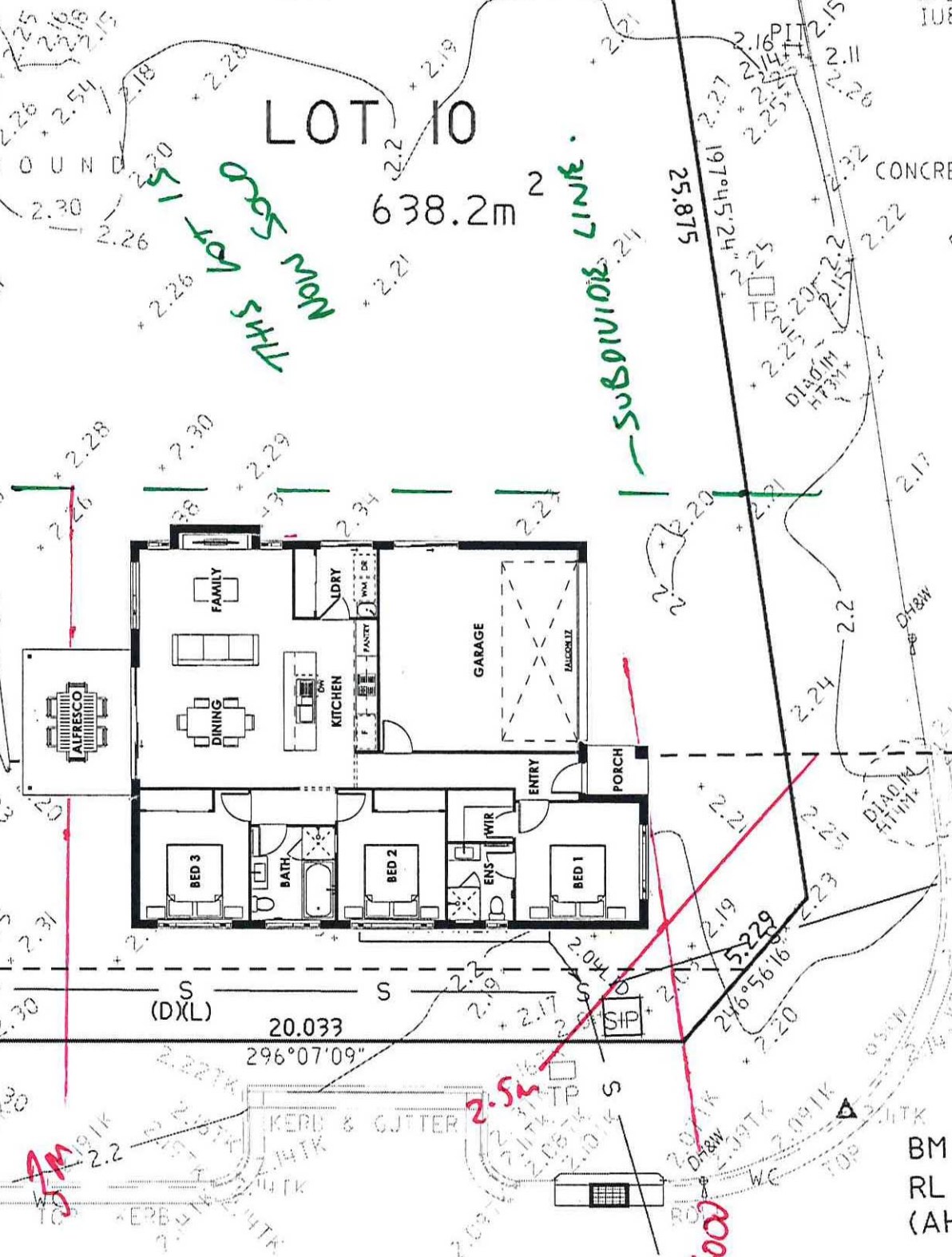
MAVERICK LANE

house name: Trento 17



DIESEL

CLOSE



29.558
26°07'09"
2.20
2.26
2.28
2.30
2.34
2.38
2.40
2.42
2.44
2.46
2.48
2.50
2.52
2.54
2.56
2.58
2.60
2.62
2.64
2.66
2.68
2.70
2.72
2.74
2.76
2.78
2.80
2.82
2.84
2.86
2.88
2.90
2.92
2.94
2.96
2.98
3.00

25.875
197°45'24"
2.15
2.16
2.17
2.18
2.19
2.20
2.21
2.22
2.23
2.24
2.25
2.26
2.27
2.28
2.29
2.30
2.31
2.32
2.33
2.34
2.35
2.36
2.37
2.38
2.39
2.40
2.41
2.42
2.43
2.44
2.45
2.46
2.47
2.48
2.49
2.50
2.51
2.52
2.53
2.54
2.55
2.56
2.57
2.58
2.59
2.60
2.61
2.62
2.63
2.64
2.65
2.66
2.67
2.68
2.69
2.70
2.71
2.72
2.73
2.74
2.75
2.76
2.77
2.78
2.79
2.80
2.81
2.82
2.83
2.84
2.85
2.86
2.87
2.88
2.89
2.90
2.91
2.92
2.93
2.94
2.95
2.96
2.97
2.98
2.99
3.00

BM 10
RL 2.11
(AHD)

DH&W