

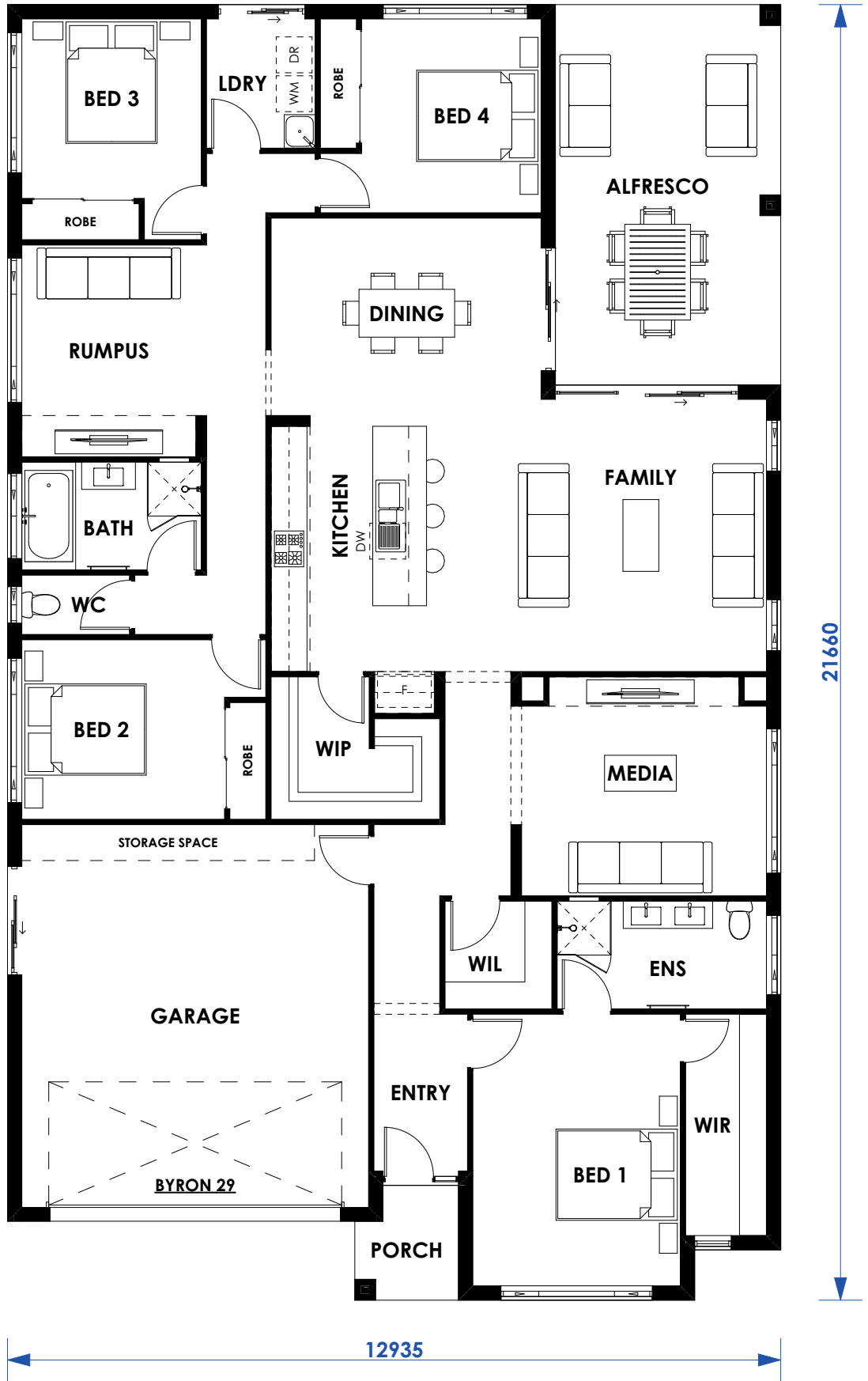
BYRON 29

Family	5.7 x 4.5
Dining	4.5 x 3.5
Media	4.1 x 3.6
Rumpus	3.1 x 3.5
Bed 1	3.4 x 4.5
Bed 2	3.4 x 3.0
Bed 3	3.0 x 3.0
Bed 4	3.0 x 3.2
Garage	5.8 x 6.4
Alfresco	3.7 x 6.3

Width	12.935m
Depth	21.660m
Minimum Lot Width	14.935m

Areas	
Living	204.08 m ²
Alfresco	23.98 m ²
Garage	40.19 m ²
Porch	3.05 m ²
Total	271.29 m ²

GFA 212.30 m²



VISION HOMES PTY LTD ABN 95 133 740 011 Phone: 4934 6666 Email: admin@visionhomes.com.au Web: www.visionhomes.com.au	DATE 24/03/2021
	REVISION A
	SCALE 1:100 @ A4

COPYRIGHT
ALL RIGHTS RESERVED. NO PART OF THIS PLAN MAY BE REPRODUCED OR TRANSMITTED IN ANY FORM OR BY ANY MEANS ELECTRONIC, MECHANICAL, PHOTOCOPIING, RECORDING OR OTHERWISE WITHOUT THE WRITTEN PERMISSION OF VISION HOMES PTY LTD.

