

STRADBROKE 28

MAIN RESIDENCE

Family	4.1 x 3.7
Dining	3.6 x 3.6
Media	3.7 x 3.6
Bed 1	3.5 x 3.5
Bed 2	3.0 x 3.0
Bed 3	3.0 x 3.0
Garage	5.9 x 5.8
Alfresco	3.0 x 3.8

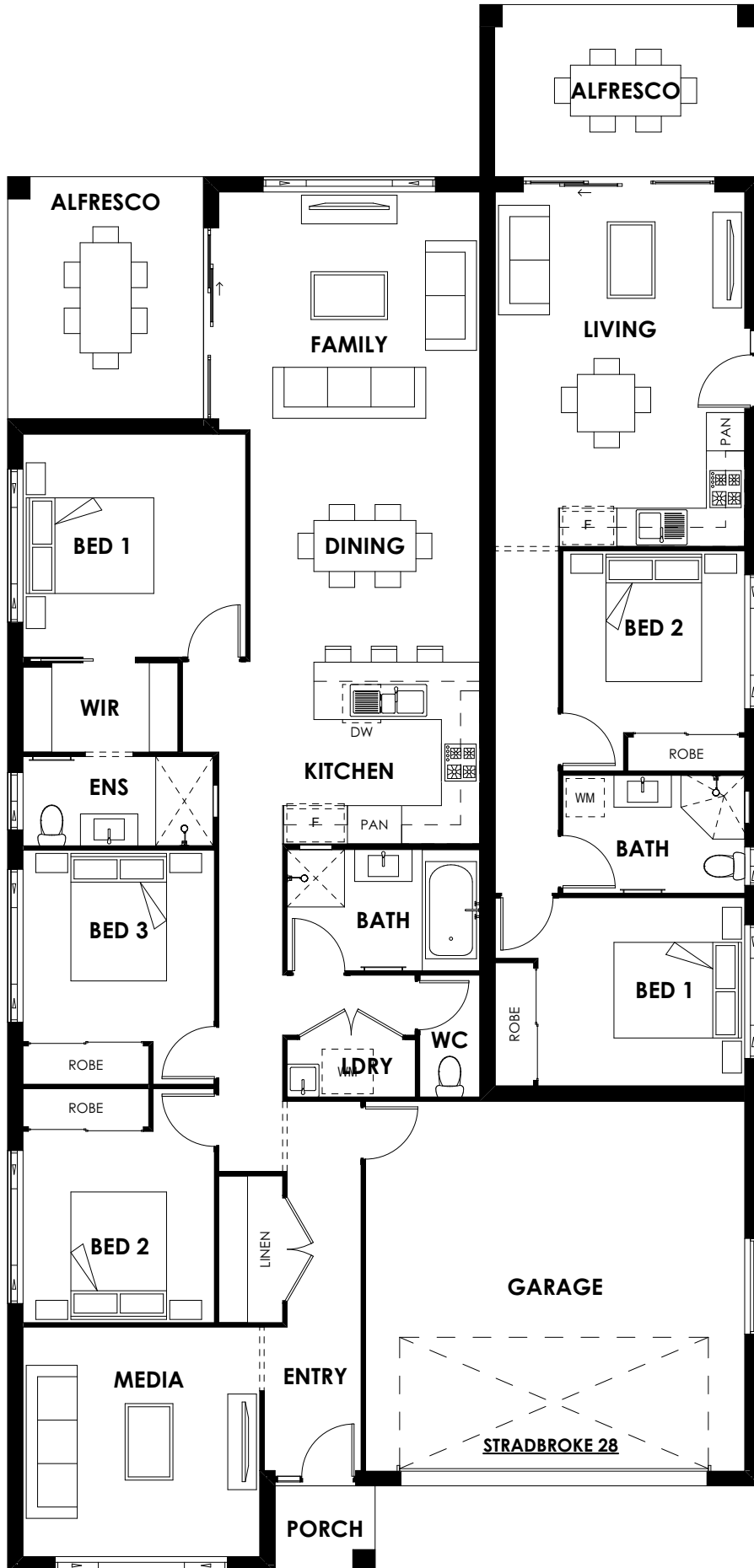
Areas	
Living	138.56m ²
Alfresco	11.67m ²
Garage	38.31m ²
Porch	2.12m ²
Total	190.66m ²

SECONDARY RESIDENCE

Living	3.9 x 5.5
Bed 1	3.2 x 2.9
Bed 2	2.8 x 2.8
Alfresco	4.1 x 2.7

Areas	
Living	59.18m ²
Alfresco	11.85m ²
Total	71.03m ²

Width	11.79m
Depth	24.58m
Minimum Lot Width	13.79m



STRADBROKE 28 - BROCHURE PLAN
1:100

VISION HOMES PTY LTD ABN 95 133 740 011 Phone: 4924 6666 Email: info@visionhomes.com.au Web: www.visionhomes.com.au	DATE	5/11/2019
	REVISION	A
	SCALE	1:100 @ A4
<p>COPYRIGHT ALL RIGHTS RESERVED. NO PART OF THIS PLAN MAY BE REPRODUCED OR TRANSMITTED IN ANY FORM OR BY ANY MEANS ELECTRONIC, MECHANICAL, PHOTOCOPYING, RECORDING OR OTHERWISE WITHOUT THE WRITTEN PERMISSION OF VISION HOMES PTY LTD.</p>		