

# NORFOLK 27

## MAIN RESIDENCE

Family	4.1 x 3.9
Dining	4.1 x 3.0
Media	3.0 x 3.6
Bed 1	3.7 x 3.7
Bed 2	3.0 x 3.0
Bed 3	3.0 x 3.0
Garage	5.9 x 5.8
Alfresco	3.0 x 4.0

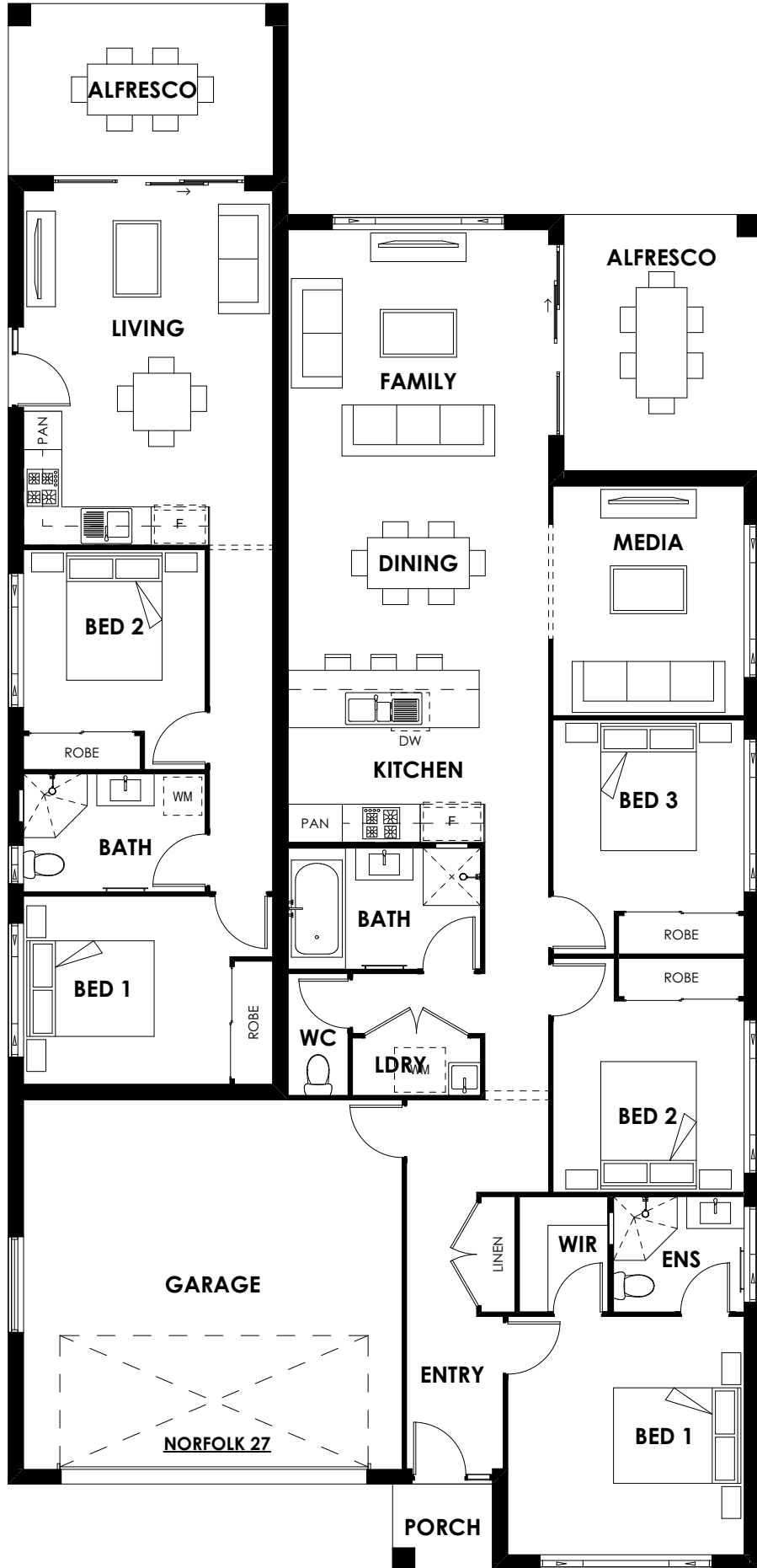
Areas	
Living	133.36m <sup>2</sup>
Alfresco	12.36m <sup>2</sup>
Garage	38.31m <sup>2</sup>
Porch	2.12m <sup>2</sup>
Total	186.15m <sup>2</sup>

## SECONDARY RESIDENCE

Living	3.9 x 5.5
Bed 1	3.2 x 2.9
Bed 2	2.8 x 2.8
Alfresco	4.1 x 2.7

Areas	
Living	59.33m <sup>2</sup>
Alfresco	11.85m <sup>2</sup>
Total	71.18m <sup>2</sup>

Width	11.79m
Depth	24.58m
Minimum Lot Width	13.79m



VISION HOMES PTY LTD ABN 95 133 740 011 Phone: 4934 6666 Email: admin@visionhomes.com.au Web: www.visionhomes.com.au	DATE 5/11/2019
	REVISION A
	SCALE 1:100 @ A4

**COPYRIGHT**  
ALL RIGHTS RESERVED. NO PART OF THIS PLAN MAY BE REPRODUCED OR TRANSMITTED IN ANY FORM OR BY ANY MEANS ELECTRONIC, MECHANICAL, PHOTOCOPIING, RECORDING OR OTHERWISE WITHOUT THE WRITTEN PERMISSION OF VISION HOMES PTY LTD.

NORFOLK 27 - BROCHURE PLAN  
1:100

