

FRASER 27

MAIN RESIDENCE

Family	3.9 x 4.2
Dining	3.9 x 3.5
Bed 1	3.7 x 4.3
Bed 2	3.0 x 3.0
Bed 3	3.0 x 3.0
Garage	6.7 x 5.8
Alfresco	4.0 x 3.0

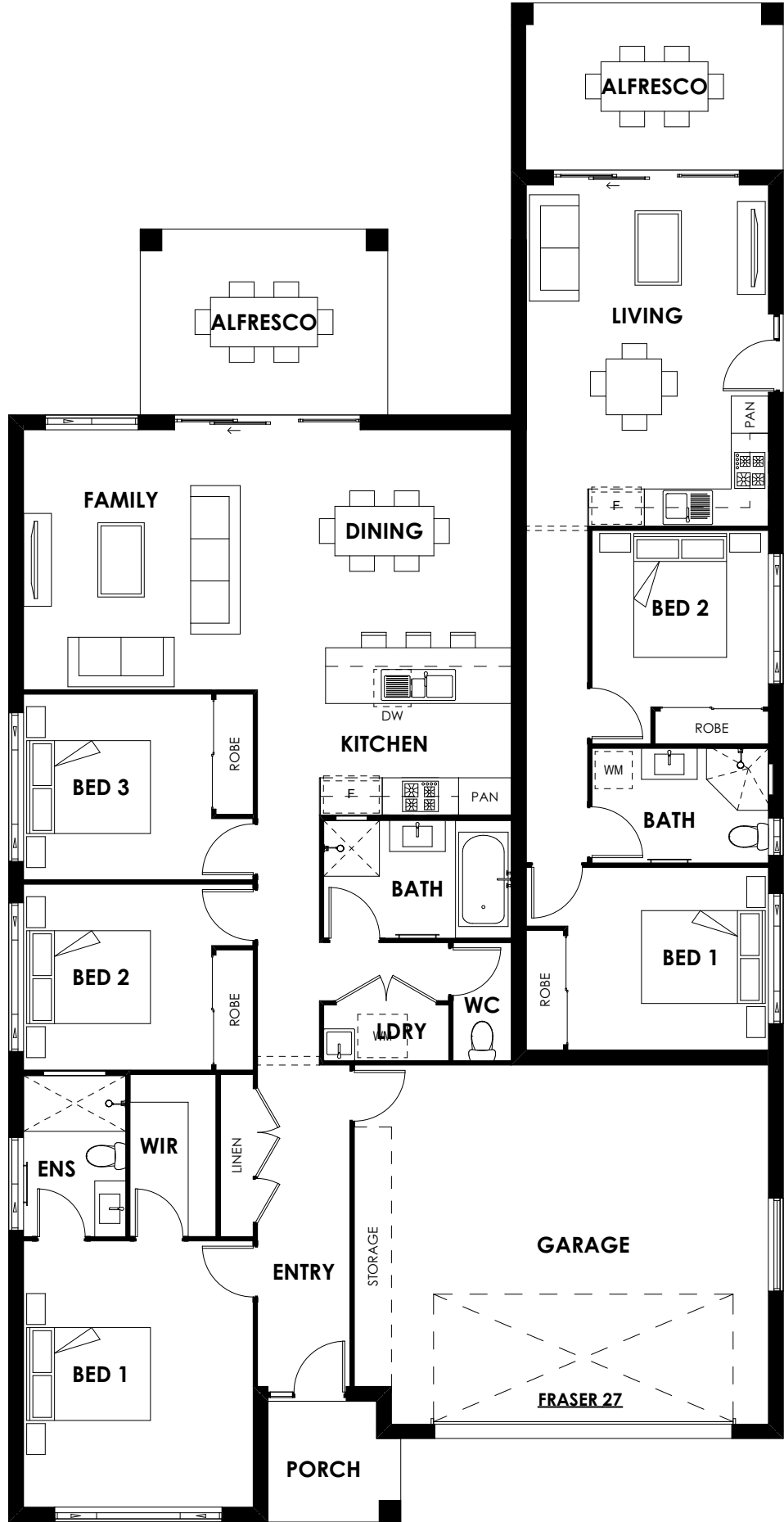
Areas	
Living	126.28m ²
Alfresco	12.00m ²
Garage	42.59m ²
Porch	3.95m ²
Total	184.82m ²

SECONDARY RESIDENCE

Living	3.9 x 5.5
Bed 1	3.2 x 2.9
Bed 2	2.8 x 2.8
Alfresco	4.1 x 2.7

Areas	
Living	59.92m ²
Alfresco	11.85m ²
Total	71.77m ²

Width	12.51m
Depth	24.53m
Minimum Lot Width	14.51m



VISION HOMES PTY LTD ABN 95 133 740 011 Phone: 4934 6666 Email: admin@visionhomes.com.au Web: www.visionhomes.com.au	DATE 5/11/2019
	REVISION A
	SCALE 1:100 @ A4
COPYRIGHT ALL RIGHTS RESERVED. NO PART OF THIS PLAN MAY BE REPRODUCED OR TRANSMITTED IN ANY FORM OR BY ANY MEANS ELECTRONIC, MECHANICAL, PHOTOCOPIING, RECORDING OR OTHERWISE WITHOUT THE WRITTEN PERMISSION OF VISION HOMES PTY LTD.	

FRASER 27 - BROCHURE PLAN
1:100

